

PM ravel AB

FABRICAGEMETHODE
Getuft 1/10" saxony

POOLSAMENSTELLING
100% PA IMPREL®

TUFTDOEK
non woven PES

RUG
Action Back

POOLGEWICHT
ca. 900 gr/m²

TOTAAL GEWICHT
ca. 1.875 gr/m²

POOLHOOGTE
ca. 4 mm

TOTALE HOOGTE
ca. 7 mm

AANTAL NOPPEN
ca. 170 000/m²

PERMANENT ANTISTATISCH
<2 kV

GELUIDSISOLATIE
ISO 140-8: 24 dB delta L

GELUIDSABSORPTIE
ISO 354: 0.20 alpha w

WARMTEDOORLAATBAARHEID
0,15 m² K/W

LICHTECHTHEID
5-6

WATERECHTHEID
4-5

BRANDKLASSE
Brandklassement C_{fl}-s1
alleen bij volledige verkleving

MÉTHODE DE FABRICATION
Tuftée 1/10" saxony

COMPOSITION DU VELOURS
100% PA IMPREL®

SUPPORT
non woven PES

DOSSIER
Double dossier synthétique

POIDS DU VELOURS
ca. 900 gr/m²

POIDS TOTAL
ca. 1.875 gr/m²

HAUTEUR DU POIL
ca. 4 mm

HAUTEUR TOTALE
ca. 7 mm

NOMBRE DE POINTS
ca. 170 000/m²

ANTISTATIQUE PERMANENT
<2 kV

ISOLATION AUX BRUITS D'IMPACT
ISO 140-8: 24 dB delta L

ABSORPTION PHONIQUE
ISO 354: 0.20 alpha w

RÉSISTANCE THERMIQUE
0,15 m² K/W

RÉSISTANCE À LA LUMIÈRE
5-6

RÉSISTANCE À L'EAU
4-5

CLASSEMENT FEU
Classement feu C_{fl}-s1
uniquement en pose collée

HERSTELLUNGSVERFAHREN
Getuftet 1/10" saxony

POLMATERIAL
100% PA IMPREL®

TRÄGERMATERIAL
PES Vlies

RÜCKENAUSRÜSTUNG
Textilrücken

POLGEWICHT
ca. 900 gr/m²

GESAMTGEWICHT
ca. 1.875 gr/m²

POLHÖHE
ca. 4 mm

GESAMTHÖHE
ca. 7 mm

NOPPENZAHL
ca. 170 000/m²

PERMANENT ANTISTATISCH
<2 kV

TRITTSCHALLDÄMMUNG
ISO 140-8: 24 dB delta L

SCHALLABSORPTIONSGRAD
ISO 354: 0.20 alpha w

WÄRMEDURCHLASSWIDERSTAND
0,15 m² K/W

LICHTECHTHEIT
5-6

WASSERECHTHEIT
4-5

BRANDVERHALTENSKLASSE
Baustoffkl. C_{fl}-s1
nur wenn vollflächig verklebt

MANUFACTURING PROCESS
Tufting 1/10" saxony

PILE CONTENT
100% PA IMPREL®

PRIMARY BACKING
non woven PES

SECONDARY BACKING
Synthetic backing

PILE WEIGHT
ca. 900 gr/m²

TOTAL WEIGHT
ca. 1.875 gr/m²

PILE HEIGHT
ca. 4 mm

TOTAL HEIGHT
ca. 7 mm

NUMBER OF KNOTS
ca. 170 000/m²

PERMANENTLY ANTISTATIC
<2 kV

SOUND INSULATION
ISO 140-8: 24 dB delta L

SOUND ABSORPTION
ISO 354: 0.20 alpha w

THERMAL RESISTANCE
0,15 m² K/W

LIGHT FASTNESS
5-6

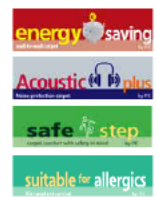
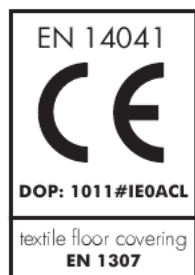
WATER RESISTANCE
4-5

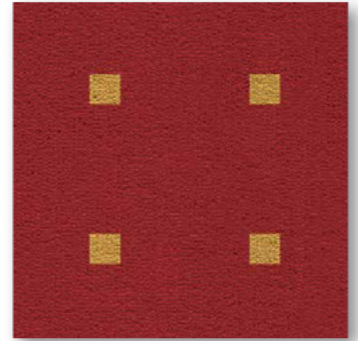
FIRE CLASS
Fireresistance C_{fl}-s1
only with full adhesion

U3P3

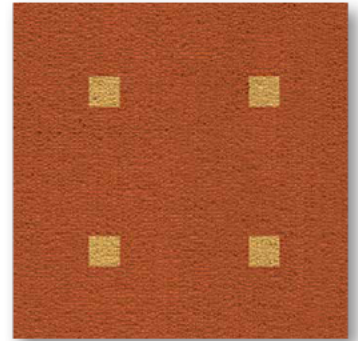
Colours and widths ⇄ 8 cm x ⇄ 8 cm

Ravel	10	26	33	43	64	73	95	97
ca 4m	•	•	•	•	•	•	•	•

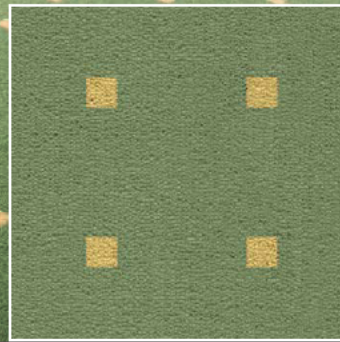




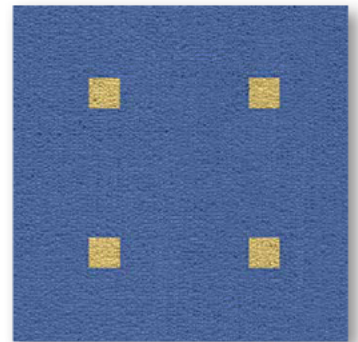
▲ 10



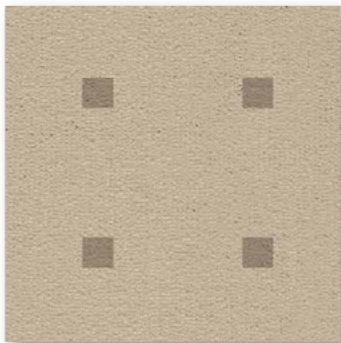
▲ 64



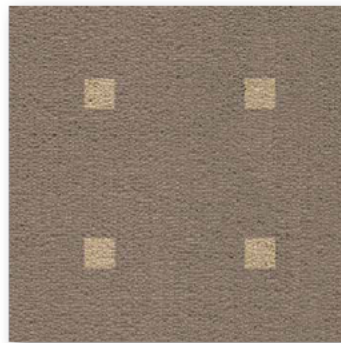
▲ 26



▲ 73



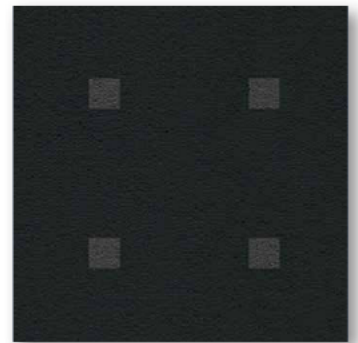
▲ 33



▲ 43



▲ 95



▲ 97