

# PM **strauss** AB

**FABRICAGEMETHODE**  
Getuft 1/10" saxony

**POOLSAMENSTELLING**  
100% PA IMPREL®

**TUFTDOEK**  
non woven PES

**RUG**  
Action Back

**POOLGEWICHT**  
ca. 900 gr/m<sup>2</sup>

**TOTAAL GEWICHT**  
ca. 1.875 gr/m<sup>2</sup>

**POOLHOOGTE**  
ca. 4 mm

**TOTALE HOOGTE**  
ca. 7 mm

**AANTAL NOPPEN**  
ca. 170 000/m<sup>2</sup>

**PERMANENT ANTISTATISCH**  
<2 kV

**GELUIDSISOLATIE**  
ISO 140-8: 24 dB delta L

**GELUIDSABSORPTIE**  
ISO 354: 0.20 alpha w

**WARMTEDOORLAATBAARHEID**  
0,15 m<sup>2</sup> K/W

**LICHTECHTHEID**  
5-6

**WATERECHTHEID**  
4-5

**BRANDKLASSE**  
Brandklassement C<sub>fl</sub>-s1  
alleen bij volledige verkleving

**MÉTHODE DE FABRICATION**  
Tuftéé 1/10" saxony

**COMPOSITION DU VELOURS**  
100% PA IMPREL®

**SUPPORT**  
non woven PES

**DOSSIER**  
Double dossier synthétique

**POIDS DU VELOURS**  
ca. 900 gr/m<sup>2</sup>

**POIDS TOTAL**  
ca. 1.875 gr/m<sup>2</sup>

**HAUTEUR DU POIL**  
ca. 4 mm

**HAUTEUR TOTALE**  
ca. 7 mm

**NOMBRE DE POINTS**  
ca. 170 000/m<sup>2</sup>

**ANTISTATIQUE PERMANENT**  
<2 kV

**ISOLATION AUX BRUITS D'IMPACT**  
ISO 140-8: 24 dB delta L

**ABSORPTION PHONIQUE**  
ISO 354: 0.20 alpha w

**RÉSISTANCE THERMIQUE**  
0,15 m<sup>2</sup> K/W

**RÉSISTANCE À LA LUMIÈRE**  
5-6

**RÉSISTANCE À L'EAU**  
4-5

**CLASSEMENT FEU**  
Classement feu C<sub>fl</sub>-s1  
uniquement en pose collée

**HERSTELLUNGSVERFAHREN**  
Getuftet 1/10" saxony

**POLMATERIAL**  
100% PA IMPREL®

**TRÄGERMATERIAEL**  
PES Vlies

**RÜCKENAUSRÜSTUNG**  
Textilrücken

**POLGEWICHT**  
ca. 900 gr/m<sup>2</sup>

**GESAMTGEWICHT**  
ca. 1.875 gr/m<sup>2</sup>

**POLHÖHE**  
ca. 4 mm

**GESAMTHÖHE**  
ca. 7 mm

**NOPPENZAHL**  
ca. 170 000/m<sup>2</sup>

**PERMANENT ANTISTATISCH**  
<2 kV

**TRITTSCHALLDÄMMUNG**  
ISO 140-8: 24 dB delta L

**SCHALLABSORPTIONSGRAD**  
ISO 354: 0.20 alpha w

**WÄRMEDURCHLASSWIDERSTAND**  
0,15 m<sup>2</sup> K/W

**LICHTECHTHEIT**  
5-6

**WASSERECHTHEIT**  
4-5

**BRANDVERHALTENSKLASSE**  
Baustoffkl. C<sub>fl</sub>-s1  
nur wenn vollflächig verklebt

**MANUFACTURING PROCESS**  
Tufting 1/10" saxony

**PILE CONTENT**  
100% PA IMPREL®

**PRIMARY BACKING**  
non woven PES

**SECONDARY BACKING**  
Synthetic backing

**PILE WEIGHT**  
ca. 900 gr/m<sup>2</sup>

**TOTAL WEIGHT**  
ca. 1.875 gr/m<sup>2</sup>

**PILE HEIGHT**  
ca. 4 mm

**TOTAL HEIGHT**  
ca. 7 mm

**NUMBER OF KNOTS**  
ca. 170 000/m<sup>2</sup>

**PERMANENTLY ANTISTATIC**  
<2 kV

**SOUND INSULATION**  
ISO 140-8: 24 dB delta L

**SOUND ABSORPTION**  
ISO 354: 0.20 alpha w

**THERMAL RESISTANCE**  
0,15 m<sup>2</sup> K/W

**LIGHT FASTNESS**  
5-6

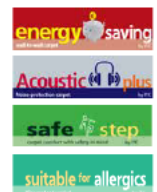
**WATER RESISTANCE**  
4-5

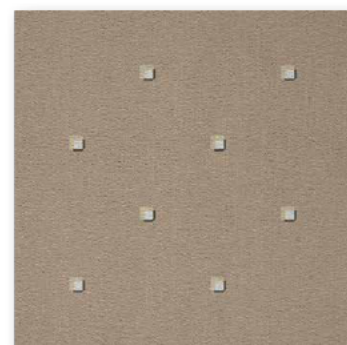
**FIRE CLASS**  
Fireresistance C<sub>fl</sub>-s1  
only with full adhesion

## U3P3

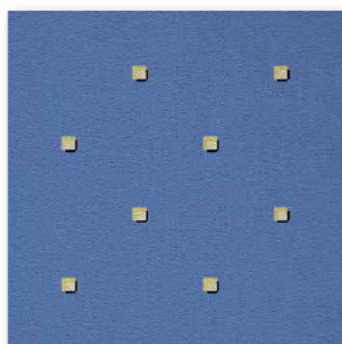
Colours and widths ⇄ 12 cm x ⇄ 12 cm

Strauss	10	23	26	43	64	73	77	95	96
ca 4m	•	•	•	•	•	•	•	•	•

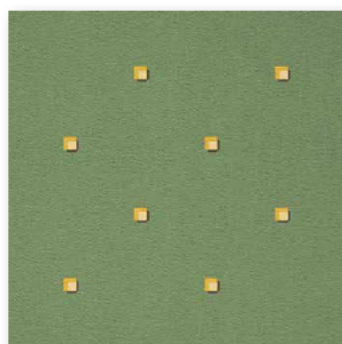




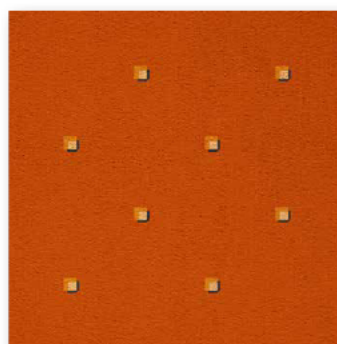
▲ 43



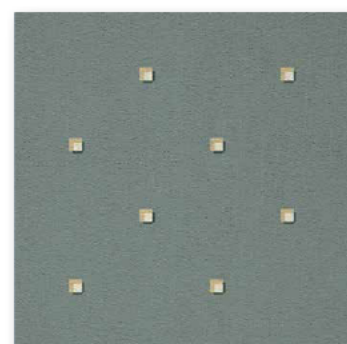
▲ 73



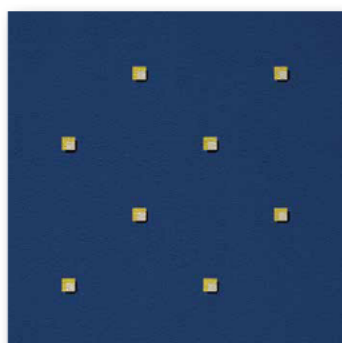
▲ 26



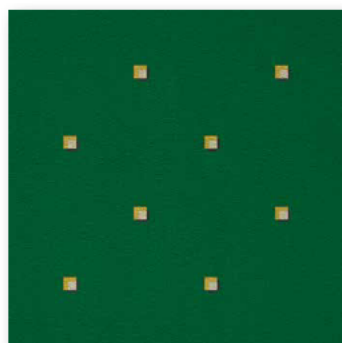
▲ 64



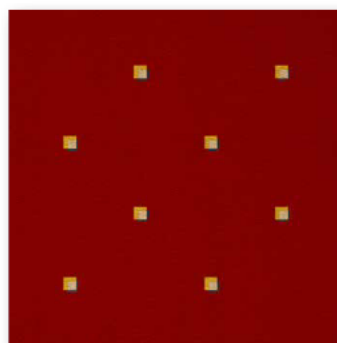
▲ 95



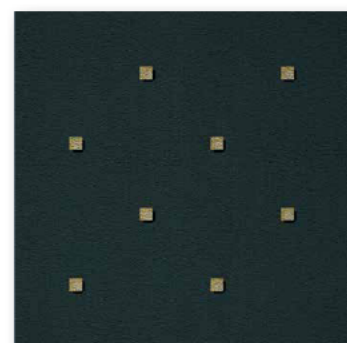
▲ 77



▲ 23



▲ 10



▲ 96